

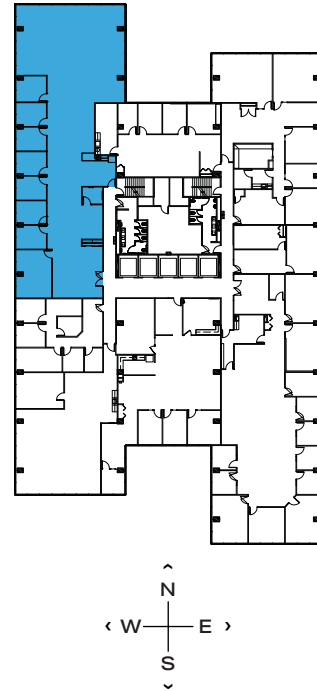
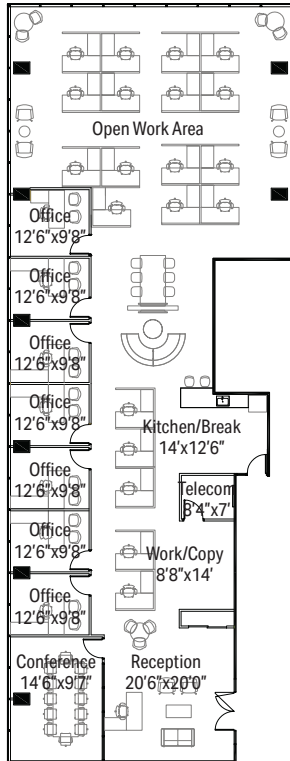


1515 WOODFIELD RD - SUITE 770

# 5,429 RSF

## SCHAUMBURG CORPORATE CENTER

1475, 1501, 1515 E Woodfield Rd  
Schaumburg, IL 60173



### LEASING

**Dave Trumpy**  
*Managing Director*  
 dtrumpy@glenstar.com  
 773.308.1031

**Bill Saviski**  
*Managing Director*  
 bsaviski@glenstar.com  
 773.837.5290

SCHAUMBURGCORPORATECENTER.COM

### PROPERTY HIGHLIGHTS

- Class A amenity package including 17,000 SF atrium
- Complimentary Midtown Athletic Club membership for tenants
- Parking garage with connected pedway and heated executive parking
- Glenstar Connect Program

### SUITE FEATURES

- New construction spec suite with CAT 6 cabling and new furniture
- 7 private offices
- 20 workstations
- 1 large conference room
- Collaboration areas
- Open kitchen/break room

