

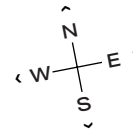
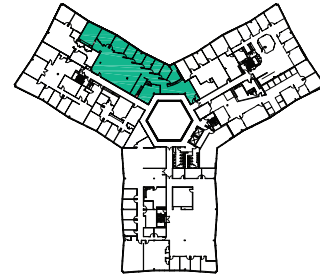
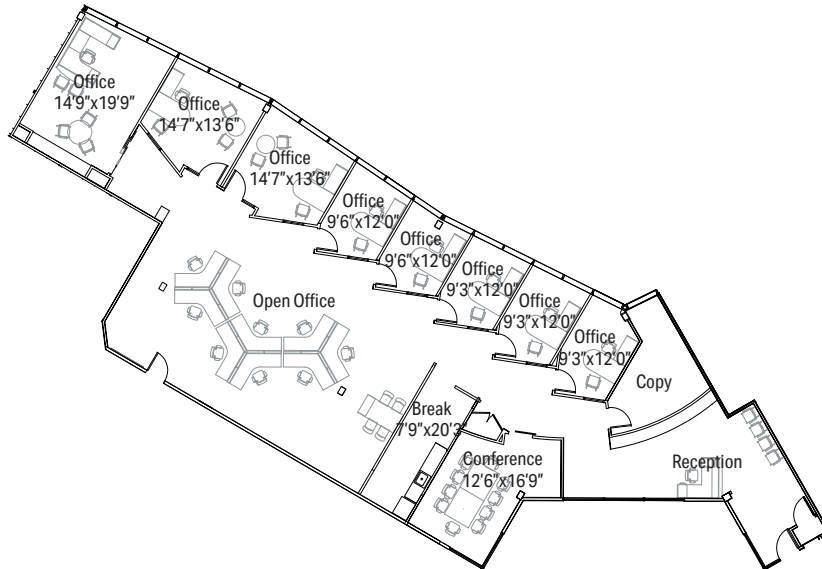


2201 WAUKEGAN RD - SUITE 255

4,999 RSF

BANNOCKBURN LAKES

2333, 2345, 2355, 2201, 2121
Waukegan Rd
Bannockburn, IL



LEASING

Dave Trumpy
Managing Director
dtrumpy@glenstar.com
773.308.1031

Bill Saviski
Managing Director
bsaviski@glenstar.com
773.837.5290

BANNOCKBURNLAKES.COM

PROPERTY HIGHLIGHTS

- Beautiful natural setting on 50-acre campus
- Amenities include tenant lounge, game room, food service, conference and fitness center
- Adjacent to Midtown Athletic Club; offers significant membership discounts tenants
- Low Lake County real estate taxes
- Free Lyft Last Mile Program
- Glenstar Connect Program

SUITE FEATURES

- Spec suite with new construction, new furniture and new CAT 6 cabling
- High-tech finishes throughout
- 8 perimeter offices, 10 workstations
- Conference, open kitchen, copy/storage; open-to-deck in open area

