

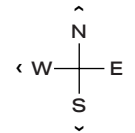
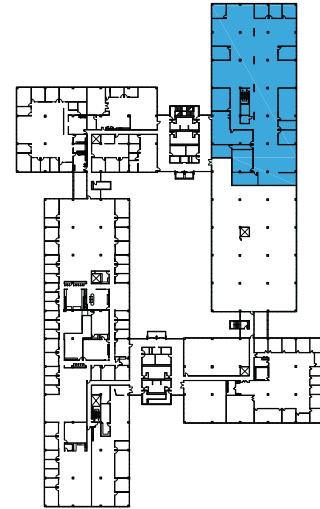
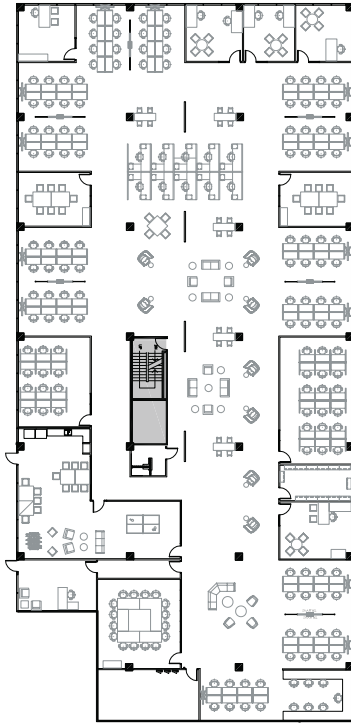


1501 WOODFIELD RD - SUITE 200E

# 19,797 RSF

## SCHAUMBURG CORPORATE CENTER

1475, 1501, 1515 E Woodfield Rd  
Schaumburg, IL 60173



### LEASING

**Dave Trumpy**  
*Managing Director*  
dtrumpy@glenstar.com  
773.308.1031

—

**Bill Saviski**  
*Managing Director*  
bsaviski@glenstar.com  
773.837.5290

SCHAUMBURGCORPORATECENTER.COM

### PROPERTY HIGHLIGHTS

- Class A amenity package including 17,000 SF atrium
- Complimentary Midtown Athletic Club membership for tenants
- Parking garage with connected pedway and heated executive parking
- Glenstar Connect Program



### SUITE FEATURES

- Tremendous window line with views to the exterior
- Fully furnished and cabled
- Open office area with 10 workstations, 104 bench style adjustable height desks and soft seating/collaboration areas; 5 private offices, 2 shared office areas with carrel seating, kitchen/lounge/gaming room, conference rooms and large storage/work room

