

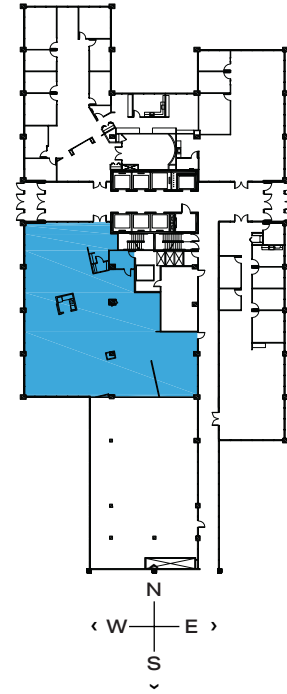


1475 WOODFIELD RD - SUITE 104

5,785 RSF

SCHAUMBURG CORPORATE CENTER

1475, 1501, 1515 E Woodfield Rd
Schaumburg, IL 60173



LEASING

Dave Trumpy
 Managing Director
 dtrumpy@glenstar.com
 773.308.1031

Bill Saviski
 Managing Director
 bsaviski@glenstar.com
 773.837.5290

SCHAUMBURGCORPORATECENTER.COM

PROPERTY HIGHLIGHTS

- Class A amenity package including 17,000 SF atrium
- Complimentary Midtown Athletic Club membership for tenants
- Parking garage with connected pedway and heated executive parking
- Glenstar Connect Program

SUITE FEATURES

- Building lobby exposure
- Fully furnished and cabled
- 23 workstations, 5 private offices, conference room, lounge and collaboration areas

